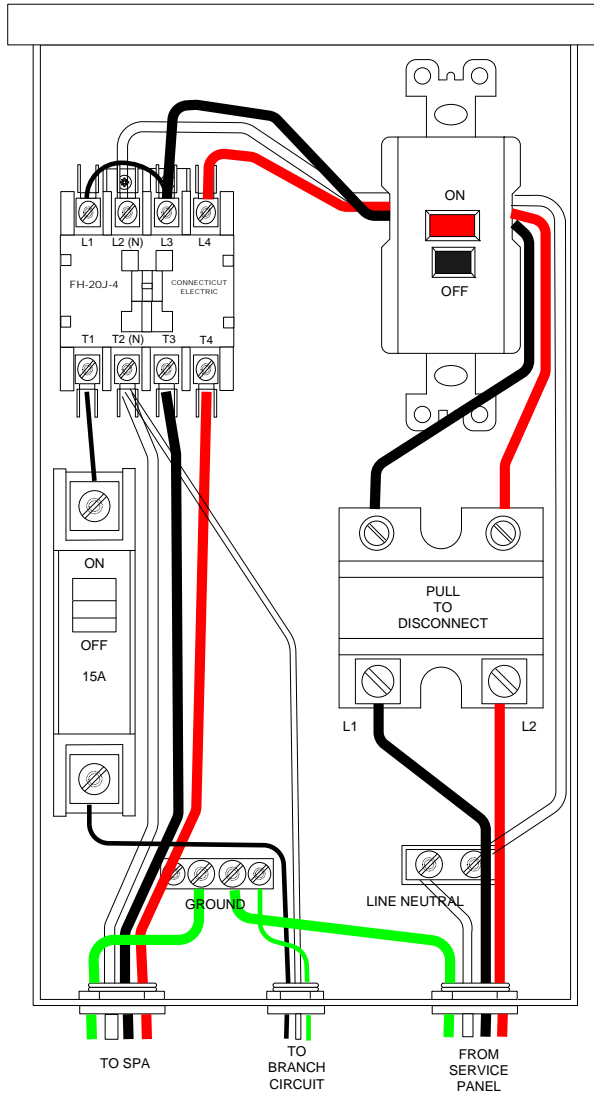


NEUTRAL WIRE FOR
15 AMP BRANCH
CIRCUIT MUST BE
CONNECTED TO
THE NEUTRAL LUG
OF THE CONTACTOR

NEUTRAL WIRE
NOT REQUIRED FOR
3-WIRE , 240 VAC
LOADS TO SPA



NEUTRAL WIRE FROM
SERVICE PANEL
REQUIRED FOR
ALL LOAD TYPES